



INSTALLATION GUIDE

RELIEF VALVE

www.definox.com

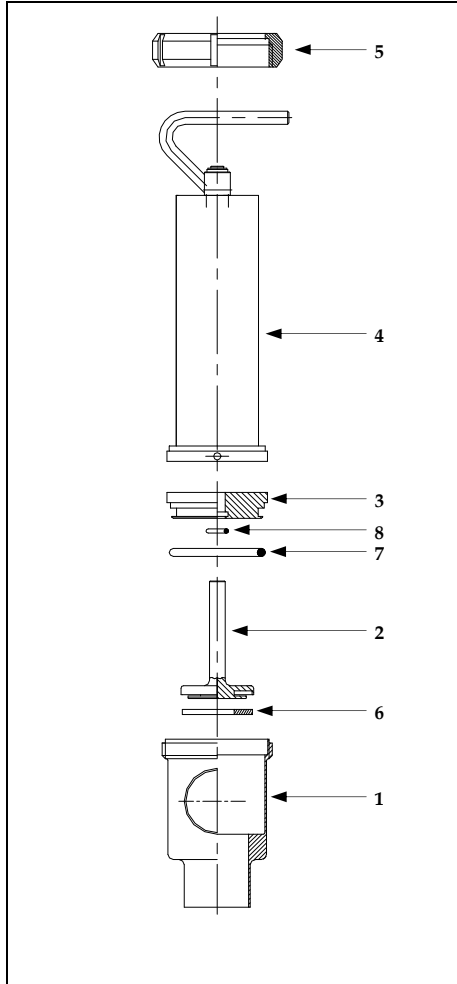
DEFINOX SAS
3 Rue des Papetiers - Z.A.C. de Tabari 2
44190 Clisson - France

☎ : +33 (0)2 28 03 98 50

📠 : +33 (0)2 28 03 88 00

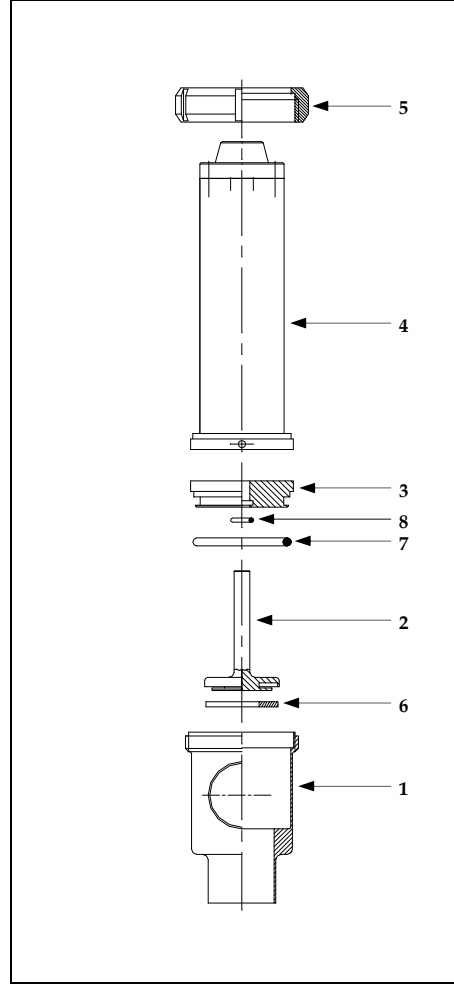
E-mail : info@definox.com

ADJUSTABLE RELIEF VALVE



- 1 : Body
- 2 : Piston
- 3 : Cover
- 4 : Bell assembly
- 5 : Nut
- 6 : Seal
- 7 : Seal
- 8 : Seal

PRE-SET RELIEF VALVE



Follow the fitting and operating instructions carefully. Take account of the actual working conditions and comply with the valve specifications indicated in the DEFINOX catalogue.

1) VALVE IDENTIFICATION

DEFINOX relief valves have an identification number on the bell (1), indicating the spring pressure. You will need this information to identify any spare parts you may need.

2) USUABLE SEALS

The following seal types can be mounted on your valve :
FOOD GRADE VITON

3) INSTALLING RELIEF VALVES

Store your equipment in its original packaging to prevent damage.

Unscrew the nut (5).

From the bell (4), remove the body (1)

(the piston (2) and the cover (3) that is with the body).

Remove the cover and the piston from the body. Secure the body to your process line.



Circulation direction of the product
(Low to high)

4) PRECAUTIONS TO BE TAKEN WHEN CARRYING OUT WELDING OF THE BODIES

Adjust the pipes : check the straightness, the out-of-roundness and the offset (play<0.5 mm), to limit the restrictions created by welding.

Any modification to the valve body for the purpose of welding must be carried out with the agreement of Definox.

Support the pipes at least 10D from the valve (valve nominal diameter).

5) ASSEMBLING RELIEF VALVES

Make sure that the seals (6 , 7 and 8) are correctly secured in their seating. Position piston (2) in body (1). Press in the cover (3) and position the bell (4) (make sure the seals are not damaged around the part edges). Manually thread and screw the nut (5). When used for the first time, check that the valve functions correctly.

6) CALIBRATION RANGE (effective pressure)

spring 1 :	0.1 to 3 bar
spring 2 :	3 to 7.5 bar
spring 3 :	7.5 to 13 bar

7) EEC CONFORMITY

DEFINOX relief valves must not be fitted in installations regulated by directive **2014/68/EU** "Pressurized equipment". It is the responsibility of the system manager to ensure that the installation in which DEFINOX valves are fitted complies with the applicable legislation and directives.

8) SPARE PARTS AND ACCESSORIES

Please refer to the general documentation or consult us.

Please consult us in the event of a malfunction.